

## Declaration of Conformity

1. Bring ramp to the right level on the dock so that it will not make damage the casters (wheels) or loadcell legs.



2. Press caster (wheels) button on the bed until you hear two beeps (bed middle/sub frame is all the way up).



## Declaration of Conformity

3. Turn bed scale off (to preserve battery power during delivery).



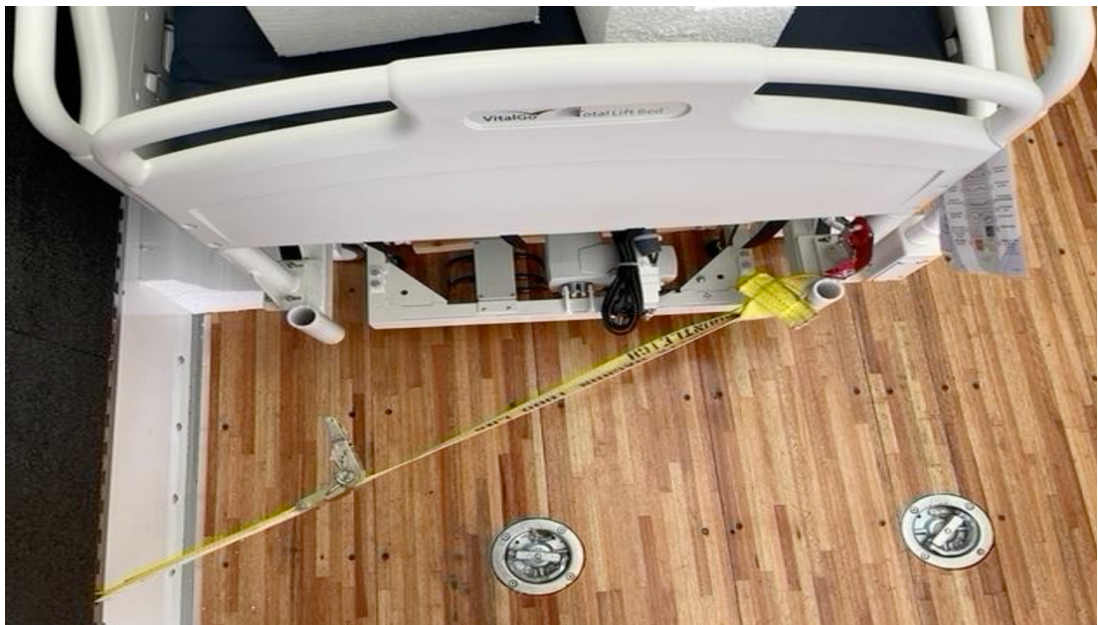
## Declaration of Conformity

4. Bring bed into truck, position against the wall, lock casters (wheels) on both sides.



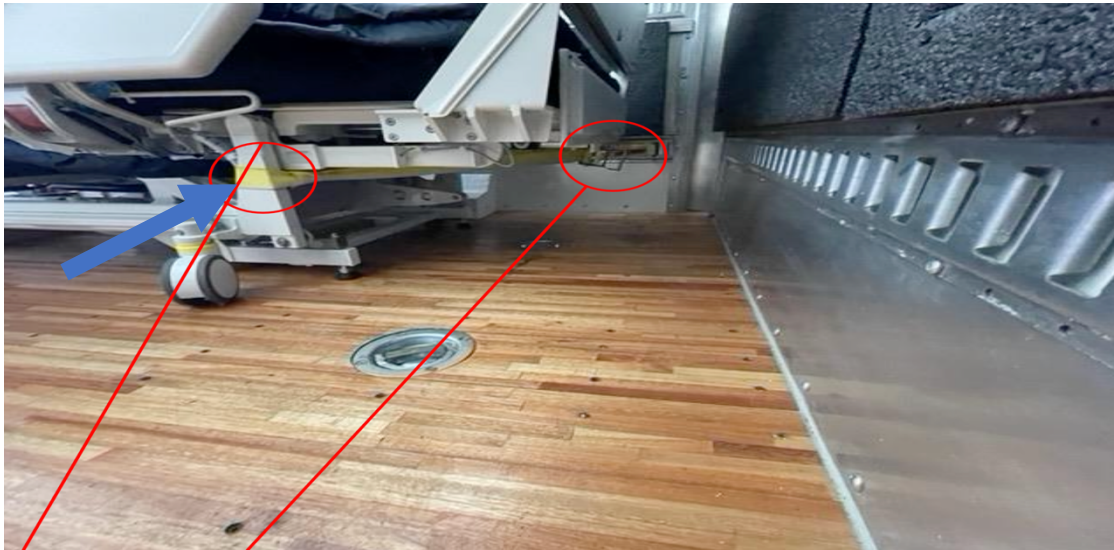
## Declaration of Conformity

### 5. Attach head side strap (around trapeze holder)



## Declaration of Conformity

6. Attach the foot side strap to frame as shown below.



7. If when strapping the bed against the wall and the side rails are getting bent in. Add a foam or hard rubber block against the wheels to create a separation.



## Declaration of Conformity

8. If transporting bed far, on bumpy roads or just for the longevity of the caster (wheels) we recommend using transport boards under the sub frame.

